

SOUTH & WEST PLANS PANEL

THURSDAY 8th June 2023

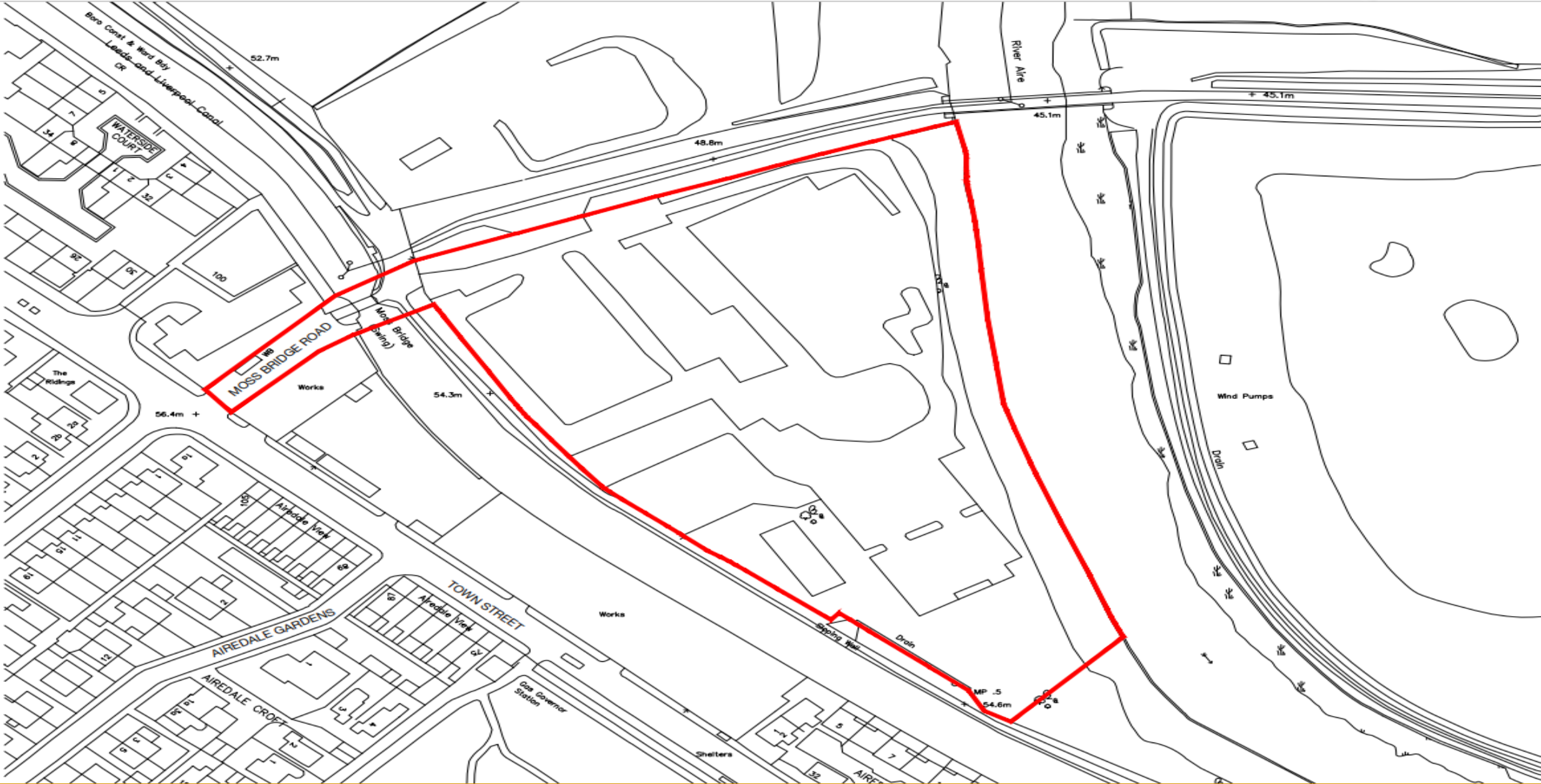


APPLICATION:

Proposal : Reserved Matter
Application 21/09266/RM relating to layout,
scale, appearance and landscaping for the
erection of 67 dwellings pursuant to outline
approval 18/01501/OT

Address: Former Airedale Mills Moss Bridge
Works Town Street Rodley Leeds LS13 1HP













Plot Type	Floor Area (sq. ft.)	Units	Total (sq. feet)	STEN	
				Value	Cost
2 BED					
STW1	175	2	350	4700	11.5%
STW2	175	2	350	4700	11.5%
3 BED					
STW3 (MWS)	350	2	700	10000	15.5%
STW4 (MWS)	350	2	700	10000	15.5%
4 BED					
STW5	700	2	1400	20000	14.5%
STW6	700	2	1400	20000	14.5%
STW7 (MWS)	1400	2	2800	40000	17.5%
5 BED					
STW8 (MWS)	3500	2	7000	100000	20.5%
Total				67	100%
				67	100%
Affordable Housing					
10 No Plots @ 15% of overall housing numbers					

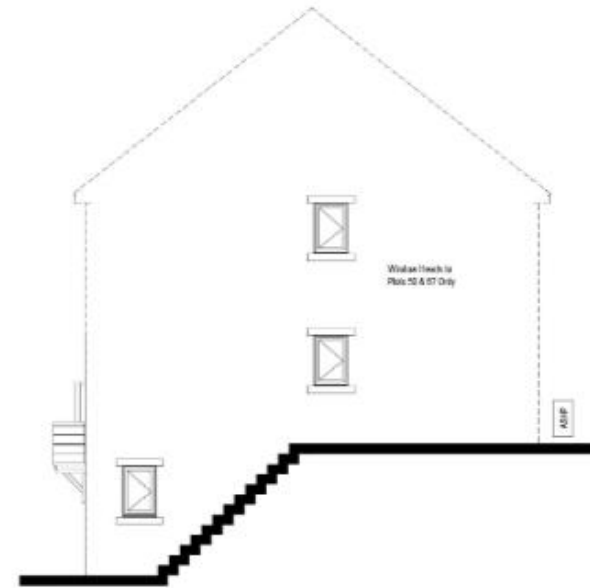
1476H4
SPLIT LEVEL SP 2



Front Elevation



Rear Elevation



Side Elevation



Side Elevation



Scaled @ 1:100



REV	DESCRIPTION	BY	DATE
C	Added Balcony, added to Det 2	SDH	18.04.23
B	House type reference updated to most recent standards	LS	22.04.23
A	Regularisation removed & replaced with 2017 EPC letters. Det 2 window enlarged	SD	14.04.23

STEN
ARCHITECTURE

STEN Architecture Ltd
The Studio
Newport Street
Widelyard
W11 1PE
Tel: 01534 559030
www.sten-architecture.co.uk
info@sten-arch.co.uk
Facebook: stenarchitects
London, New Architects

CASA
BY HODA

Moss Bridge Road, Rodley

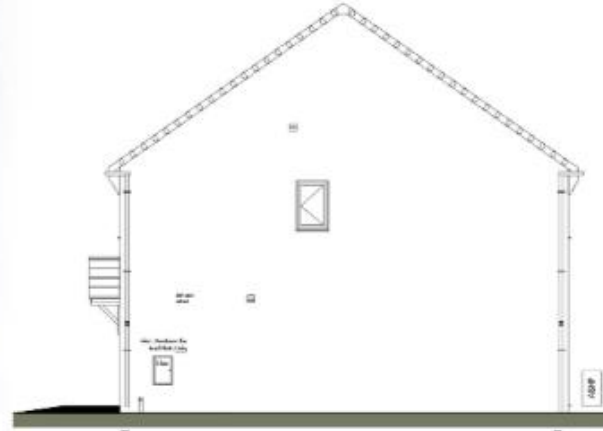
Planning Drawings 1476H4 Split Level SP 2			
SCALE	DATE	REV	DRONE
1:100	Oct 21	--	--
PROJECT NO	DRAWING NO	WORK NO	
2155	2155.1476H4.01	C	

eds.gov.uk

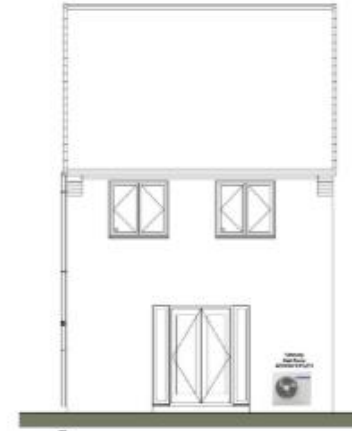
926H3 Plot 17 & 29



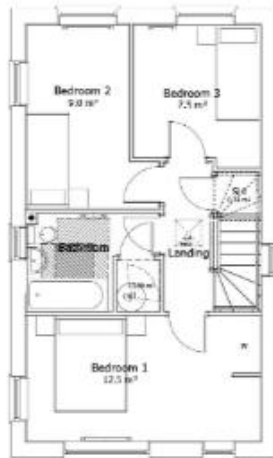
Front Elevation



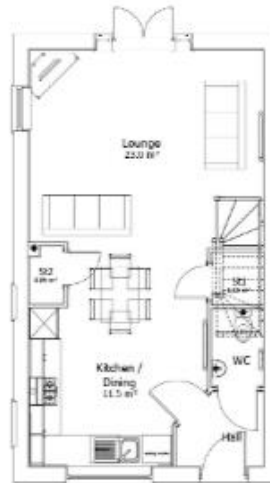
Side Elevation



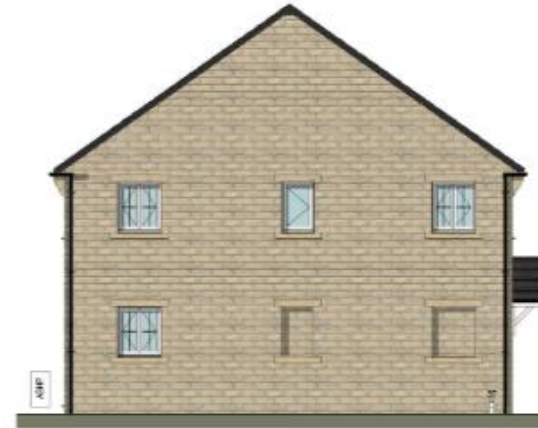
Rear Elevation



First Floor Layout



Ground Floor Layout



Side Elevation

Scaled @ 1:100



REV	DESCRIPTION	BY	DATE

STEN
ARCHITECTURE

STEN Architecture Ltd
The Studio
Newport Street
Bristol
BS1 1PS
Tel: 01154 958360
www.sten-architecture.co.uk
info@sten.co.uk
Facebook: stenarchitecture
LinkedIn: Sten Architecture

CLIENT

CASA
BY HOSEA

Moss Bridge Road, Rodley

PROJECT
Planning Drawings
926H3 Plots 17 & 29

SCALE	DATE	ISSUE	DESCRIPTION
1:100	Oct 21	--	--
2155	2155.926H3.01		

Leeds.gov.uk



FRONT ELEVATION

See site specific materials schedule and associated materials plan



SIDE ELEVATION

See site specific materials schedule and associated materials plan

Scaled @ 1:100



B	Final floor and window schedule final building Regs Part 3	SMH	18.04.21
A	Final floor schedule - final floor schedule - Regs Part 3 - Schedule and final with final balance	SD	14.04.21
REV	DESCRIPTION	BY	DATE

STEN
ARCHITECTURE

STEN Architecture Ltd
The Arcade
Harwood Street
Wakefield
WF1 1PB
Tel: 01524 506810

Web: www.sten-architecture.co.uk
Email: info@sten-arch.co.uk
Facebook: stenarchitects
LinkedIn: Sten Architecture

CLIENT	CASA BY HODDA	TYPE	Planning Drawings Apartments
PROJECT	Moss Bridge Road, Rodley	SCALE	1:100
		DATE	Oct 21
		ISSUES	-
		REVISIONS	-
		PROJECT NO.	2155
		TAG/ISSUE NO.	2155.APT.01
		REVISION	B



REAR ELEVATION

See site specific materials schedule and associated materials plan

SIDE ELEVATION

See site specific materials schedule and associated materials plan

Scaled @ 1:100

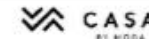


REV	DESCRIPTION	BY	DATE
B	FINAL DRAWING FOR PERMIT APPLICATION	MMH	18.04.21
A	FOR PERMIT APPLICATION - FIRST REVISION	MMH	14.04.22

STEN
ARCHITECTURE

STEN Architecture Ltd
The Stride
Horseshoe Street
Wakefield
WF1 1PB
Tel: 01924 309300
Email: info@stena.co.uk
Website: www.stena.co.uk

CLIENT



Moss Bridge Road, Rodley

Planning Drawings Apartments			
SCALE	DATE	ISSUES	APPROVED
1:100	Oct 21	—	—
PROJECT NO:	2155	DRAWING NO:	2155.APT.02
			SECTION: B



Open Space

Open space is defined as any area of land which is not covered by buildings, roads, or other structures and is available for public use. It may be used for recreation, sports, or other purposes. The plan shows various types of open space, including parks, playing fields, and public squares.

The plan shows various types of open space, including parks, playing fields, and public squares. The plan also shows the location of various public facilities, such as schools, libraries, and community centres.

The plan also shows the location of various public facilities, such as schools, libraries, and community centres. The plan also shows the location of various public services, such as bus stops, cycle racks, and public toilets.

The plan also shows the location of various public services, such as bus stops, cycle racks, and public toilets. The plan also shows the location of various public infrastructure, such as roads, bridges, and public art.

The plan also shows the location of various public infrastructure, such as roads, bridges, and public art. The plan also shows the location of various public services, such as bus stops, cycle racks, and public toilets.

The plan also shows the location of various public services, such as bus stops, cycle racks, and public toilets. The plan also shows the location of various public infrastructure, such as roads, bridges, and public art.

The plan also shows the location of various public infrastructure, such as roads, bridges, and public art. The plan also shows the location of various public services, such as bus stops, cycle racks, and public toilets.

The plan also shows the location of various public services, such as bus stops, cycle racks, and public toilets. The plan also shows the location of various public infrastructure, such as roads, bridges, and public art.

The plan also shows the location of various public infrastructure, such as roads, bridges, and public art. The plan also shows the location of various public services, such as bus stops, cycle racks, and public toilets.

The plan also shows the location of various public services, such as bus stops, cycle racks, and public toilets. The plan also shows the location of various public infrastructure, such as roads, bridges, and public art.

The plan also shows the location of various public infrastructure, such as roads, bridges, and public art. The plan also shows the location of various public services, such as bus stops, cycle racks, and public toilets.

The plan also shows the location of various public services, such as bus stops, cycle racks, and public toilets. The plan also shows the location of various public infrastructure, such as roads, bridges, and public art.

The plan also shows the location of various public infrastructure, such as roads, bridges, and public art. The plan also shows the location of various public services, such as bus stops, cycle racks, and public toilets.

Key

- Existing open space areas
- Proposed open space areas
- Open space areas to be created through the development
- Open space areas to be created through the development (including public art)
- Open space areas to be created through the development (including public art)

Turf & Drilling

- Open space areas to be created through the development
- Open space areas to be created through the development
- Open space areas to be created through the development

Plant Schedule

Tree	Latin Name	Supply	Size	Date	Notes
Apple	Malus domestica	100	1500	2023	Plant in open space areas
Birch	Betula pendula	100	1500	2023	Plant in open space areas
Cherry	Prunus avium	100	1500	2023	Plant in open space areas
Hawthorn	Crataegus monogyna	100	1500	2023	Plant in open space areas
Maple	Acer platanoides	100	1500	2023	Plant in open space areas
Rowan	Sorbus domestica	100	1500	2023	Plant in open space areas
Spindle	Eurotia fruticosa	100	1500	2023	Plant in open space areas
Willow	Salix caprea	100	1500	2023	Plant in open space areas

Open Space Details

Tree	Latin Name	Supply	Size	Date	Notes
Apple	Malus domestica	100	1500	2023	Plant in open space areas
Birch	Betula pendula	100	1500	2023	Plant in open space areas
Cherry	Prunus avium	100	1500	2023	Plant in open space areas
Hawthorn	Crataegus monogyna	100	1500	2023	Plant in open space areas
Maple	Acer platanoides	100	1500	2023	Plant in open space areas
Rowan	Sorbus domestica	100	1500	2023	Plant in open space areas
Spindle	Eurotia fruticosa	100	1500	2023	Plant in open space areas
Willow	Salix caprea	100	1500	2023	Plant in open space areas

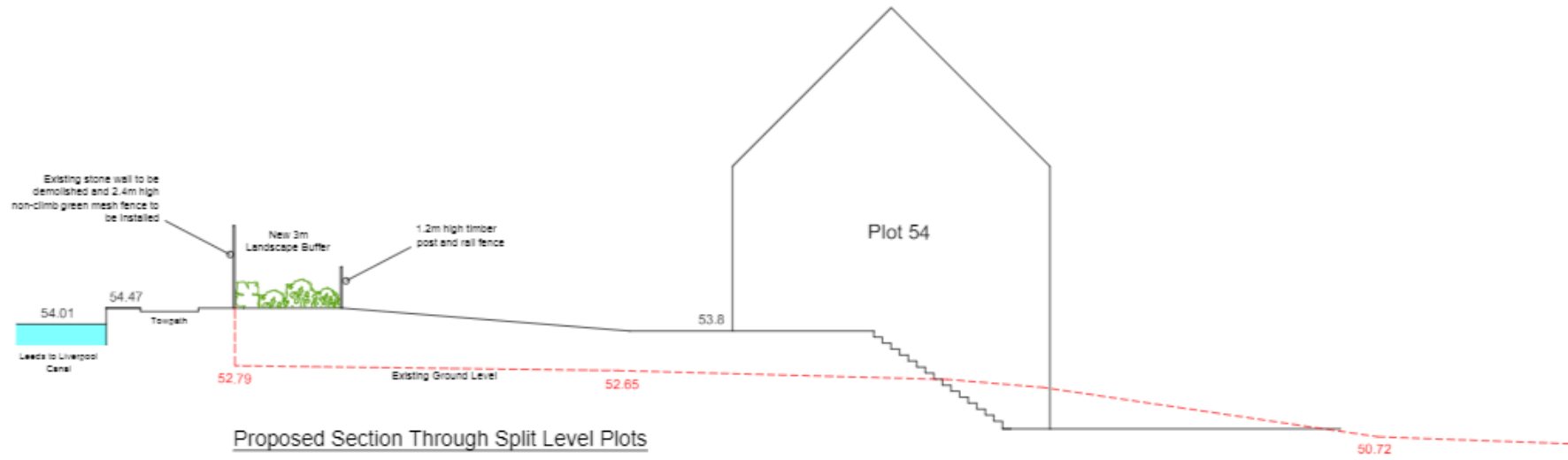
Open Space Details

Tree	Latin Name	Supply	Size	Date	Notes
Apple	Malus domestica	100	1500	2023	Plant in open space areas
Birch	Betula pendula	100	1500	2023	Plant in open space areas
Cherry	Prunus avium	100	1500	2023	Plant in open space areas
Hawthorn	Crataegus monogyna	100	1500	2023	Plant in open space areas
Maple	Acer platanoides	100	1500	2023	Plant in open space areas
Rowan	Sorbus domestica	100	1500	2023	Plant in open space areas
Spindle	Eurotia fruticosa	100	1500	2023	Plant in open space areas
Willow	Salix caprea	100	1500	2023	Plant in open space areas

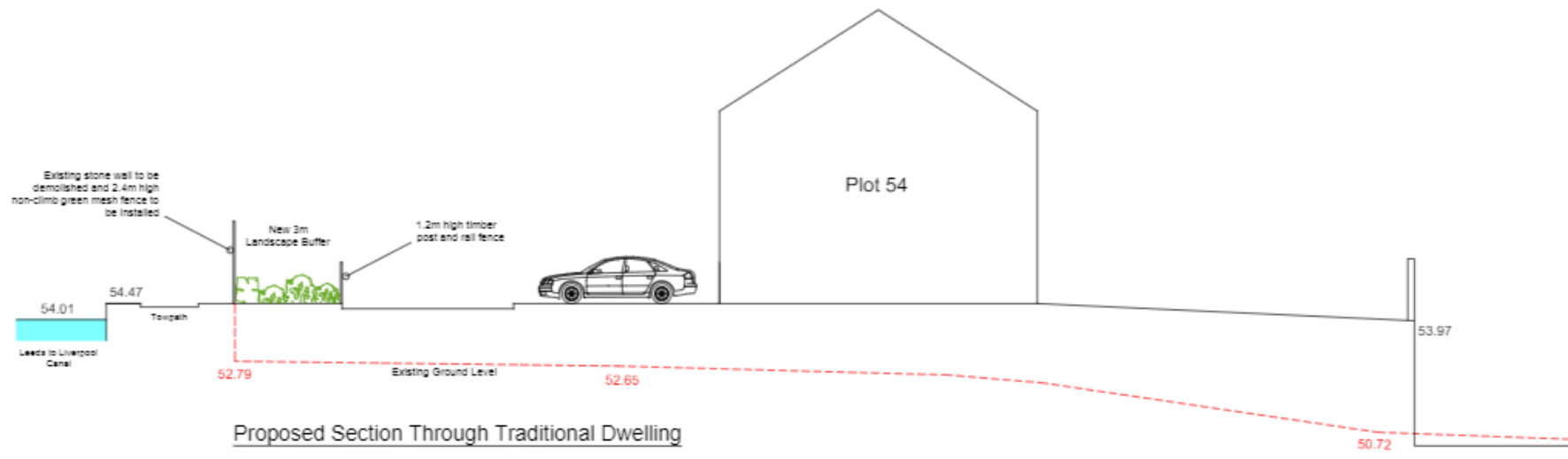
Open Space Details

Tree	Latin Name	Supply	Size	Date	Notes
Apple	Malus domestica	100	1500	2023	Plant in open space areas
Birch	Betula pendula	100	1500	2023	Plant in open space areas
Cherry	Prunus avium	100	1500	2023	Plant in open space areas
Hawthorn	Crataegus monogyna	100	1500	2023	Plant in open space areas
Maple	Acer platanoides	100	1500	2023	Plant in open space areas
Rowan	Sorbus domestica	100	1500	2023	Plant in open space areas
Spindle	Eurotia fruticosa	100	1500	2023	Plant in open space areas
Willow	Salix caprea	100	1500	2023	Plant in open space areas





Proposed Section Through Split Level Plots



Proposed Section Through Traditional Dwelling

SOUTH & WEST PLANS PANEL

THURSDAY 8th June 2023

END OF PRESENTATION

